

|| |

13910407 : <

13910516 : <

٣٥

/

/

1393



?

Ã



) i (.  
Email meggedy\_design@yahoo.com  
Email s\_m\_mofidi@iust.ac.ir



1973

1973

1973

1973

1973

1973

<

1973

1973

□

1973

1973

(Reddy, 2003)

1973

1973

1973

1973

1973

1973

1973

(Khodabakhshian et al., 2012)

1973

□

1973

1973

1973

1973

1973

1973

(Sterling & Godard, 2001)

1973

1973

1973

1973

□ □

1973

1973

1973

□

1973

□

1973

□

(Wendt, 1982, 19)

□

1973

1973

□

□

1973

□

1973

1973

1973

1973

□

1973

□

1973

1973

1973

1973

1973

1973

1973

1973

1973

1973

1973

□

1973

1973

1973

1973

1973

1973

1973

1973

1973

1973

1973

1973

1973

1973

1973

1973

1973

1973

1973

1973

1973

1973

1973

1973

1973



.)1386 (

‡

¿

¿

l

<sup>3</sup>/<sub>4</sub>

)BS

BW

«

μ

∅

∅

∅

∅

¿

ndu

B

h

∅

f

∅

∅

d

.)12 1375 (



¿

<sup>3</sup>/<sub>4</sub>

¿

.)3091387 (

¿

1



1393

¿

-μ

¿

f

μ

-

)

(

‡

<sup>3</sup>/<sub>4</sub> (

‡

§

)

)

(

‡

‡

- ‡

l

-

-

-

μ

-





‡

‡

)387 (

:

» «

§

Ã

)309 (

‡

§

Ã

)391 (

μ

μ



)310384 (

} |

{

‡

‡

)1 (

‡

‡

(

)

¿

"

|

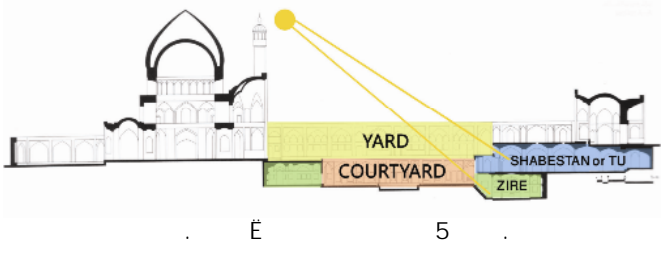
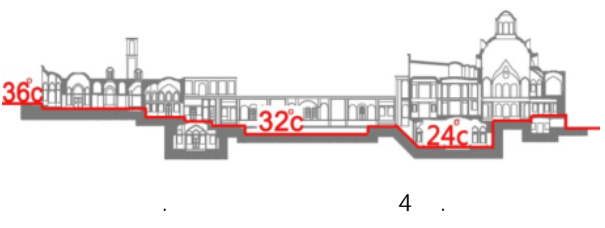
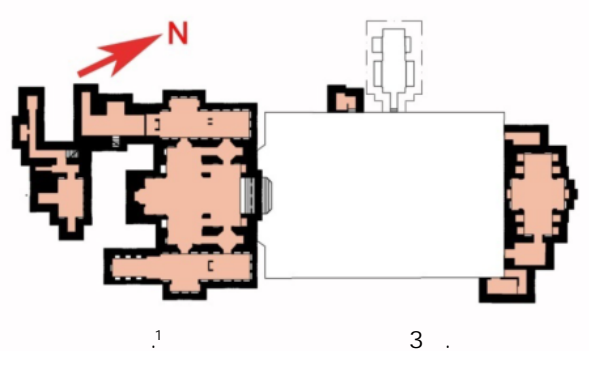
)649381 (

)370 (

¿

<





.)321389

( 36

11/30

24

32

» « » «

È

«

¿

«

Ã

«

1393



» «  
 † )166 1387 (

)16 1375 (

314 1387 (

4 3 ) (347 (

65 (E

é

μ

)66 1381 (

: )30 1389 ( )66 1381 (

†

†

» †

x

†

)289 1389 ( )134 1389 (



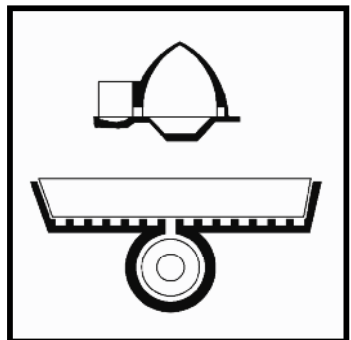
(Source: imna, 2011)



(Source: anobanini, 2011)







\_\_\_\_\_

10

9.  
)1389 : (

{ . 10

. 12/6

,52621388 (



< . < "

) ( ) (

)3161389 (

9 0

< "

‡

|

< μ

.324 Æ

È

<

) (

1: . x

È

" <

) p (.

.)1386 1 .

:

.)1380 2 .

: ) p (.

.)1390 3 .

ì Æ Æ

1388

4

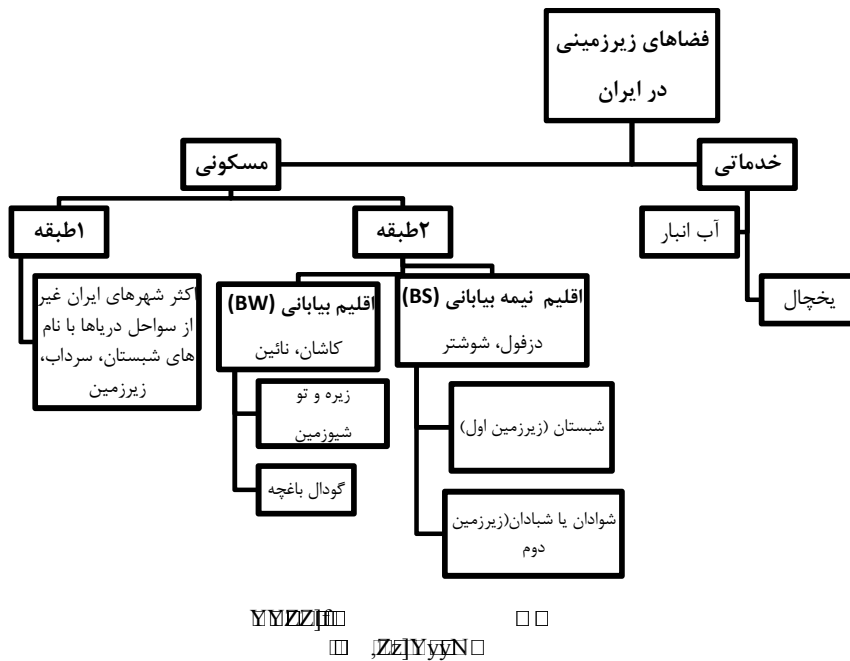
Æ

: .)

(. )1385 5.

.)330 (

6 5



16. ( ) 1377. p ( )

17. ( ) 1384. p ( )

18. anobanini (2011). Retrieved March, 2011, from <http://www.anobanini.ir/itinerary/fa/.php>

19. ghoolabad.(2011). Retrieved March, 2011, from <http://www.ghoolabad.com/index2.asp?cat=d&id=55>

20. imna. (2011). Retrieved March, 2011 from <http://imna.ir/vdca0mnm.49nuu15kk4.html>

21. Khodabakhshian, M., Mofidi, S.M., Habib, F., (2012). Typology of Earth – Shelter Architecture of Iran. *International Journal of Architecture and Urban Development*, 6, 5-10.

22. Reddy P., (2003). *Going underground a Cumbrian perspective*. U.K: Technology.

23. Sterling, R., & Godard, J. P. (2001). *GEOENGINEERING CONSIDERATIONS IN THE OPTIMUM USE OF UNDERGROUND SPACE*. LA. Other Technical Publications ITA-AITES.

24. Wendt, R.L. (1982). *Earth-Sheltered Housing, An Evaluation of Energy-Conservation Potential*. Oak Ridge, Tennessee: Oak Ridge national laboratory.

6. ( ) 1388. p ( )

7. ( ) 1387. p ( )

8. ( ) 1389. p ( )

9. ( ) 1388. p ( )

10. ( ) 1389. p ( )

11. ( )

12. ( ) 1387. p ( )

13. ( ) 1379. p ( )

14. ( ) 1375. p ( )

15. ( ) 1387. p ( )